

# C335

C335v





Twice as  
fascinating

SEALINE  
C335 + C335v



## SEALINE C335v

### Dynamic hull design

The hull design provides excellent performance and makes a bold statement of style and innovative spirit.

### Bifold door & tilting window

Open the sliding saloon door and the hinged window to the cockpit bar to blur the boundaries between inside and out!

### Starboard sliding door

Step out through the almost invisible glass door on the starboard side to reach the bow area.

Choose what drives you:  
outboards or inboards

## SEALINE C335

### Large bathing platform

Dive, swim, sunbathe: The SEALINE C335 features an extra-large bathing platform with teak decking and a stainless-steel bathing ladder.

### Two generous sun lounges

Sunbathing for family and friends. In addition to the sunbed on the foredeck, the cockpit table can be transformed into a comfortable lounge.

### Two opening roof elements

Maximum versatility and comfort for the family. Shade and sun where you need them.

All SEALINE yachts are born of the same values: they feature wide interior spaces, lots of natural light and outstanding design with German engineering inside. In short, they combine all the qualities to make family boating carefree and safe. As for these trademarks, the C335 and C335v display the true spirit of SEALINE.

C335



enjoy the  
Light

feel the  
Space

combine functionality with  
Design





## Stylish lounging, fine food, sunny days

The SEALINE C335 and C335v are flexible all-weather yachts that are perfectly suited for outdoor living. Extensively equipped for a summer lifestyle, as well as moments when the weather doesn't play along. Their easy handling and effortless performance make your boating experience most delightful.



Just beyond the cockpit, the sea awaits you – and from the bathing platform you can take up its restless invitation. Safe access from the cockpit comes courtesy of a gate and handrail. And you can slip effortlessly into the water via the solid stainless-steel ladder. Bathing platforms are available for both models in different designs – according to your personal wishes.



Aperitif, sunbathing or dinner? The cockpit area is so flexible that you can enjoy the whole day here. SEALINE's convertible design appears in every detail: the folding table is equipped with glass holders and can be lowered to become a spacious lounging area. Spotlights overhead and the retractable soft-top allow you to control light and shade.





Bringing the inside outside is part of the irresistible flair of your SEALINE yacht. The cockpit area and saloon are connected by a bifold door and tilt-up window. When both elements are closed, you enjoy stunning panoramic views – or one-level-living on sunny days when they are open.





The SEALINE C335 and C335v offer an unrivalled variety of possibilities in 33 feet. A sun lounge awaits you on the foredeck, which is every bit the match of the cockpit. Large cushions and four drink holders allow everyone aboard to make themselves comfortable. The forward section can be converted into a bench seat with backrest.





## Enjoy driving to the max

Gunning the throttle unleashes hundreds of horsepower – with the propulsion of your choice. The inboards of the SEALINE C335 will impress you with constantly high performance, regardless of the boat's load or the sea state. Or experience an action-packed driving experience, outstanding acceleration and rapid speeds of up to 40 knots with the twin 300hp outboards of the SEALINE C335v.





Show your family how safe a dynamic drive can feel. The power of the SEALINE C335 and C335v is always coupled with excellent handling characteristics. The hull stays precisely on track, leans smoothly into the turns and can be manoeuvred confidently even in waves.



See exterior gallery



The next-generation helm design is consistently minimal. The ergonomically arranged instruments are intuitive to use. High-resolution displays provide all the information you need at a glance. Experience the speed through the opening side door. And when the excitement gets too much, helm on your feet.





## Time for a new sense of elegance

With the new C335 and C335v motor yachts, SEALINE proves that highest demands on lifestyle can be met even in the 33-foot class. Top-notch materials are used more extensively than ever before. The sophisticated design concept creates room for even more comfort and freedom.



It's only this bright on a SEALINE. Daylight streams into the interior from all sides through the impressive expanse of glazing – even from above. When the electric sunroof is fully open, almost the entire saloon is outdoors. If the weather changes, a sheltered lounge area is waiting for you inside. The lowering saloon table turns the sofa into a reclining area, which you can extend even further by turning the backrest of the passenger seat.



With the fold-out bar between saloon and cockpit, it becomes a pleasure to serve coffee or cocktails straight from the galley. This small detail, perfectly executed, can create a casual beach club atmosphere on deck.



The galley is a design highlight in itself. Work surfaces, refrigerator space and storage are class leading. With a gas oven, sink and two-burner gas hob, you can easily realise any culinary project. After dinner, style is the order of the day: all galley fittings can be elegantly concealed with covers in your choice of material.





## A five-star home: the master cabin

Welcome to the owner's cabin, with its first-class comfort. Subtle colours and high-end materials are the key to its aesthetic style. Sunlight fills the room from four directions – indirect, soft light brings out the interior design after sunset. Take anything on board that makes your journey more enjoyable: A large mirrored wardrobe and shelves next to the island bed provide plenty of storage space.



Both the SEALINE C335 and the C335v give your whole family an exclusive home away from home. Like the owner's cabin, the guest cabin sets class-leading standards in headroom and berth size. The sun shines through two hull windows onto the king-size bed and the newly designed bench seat.

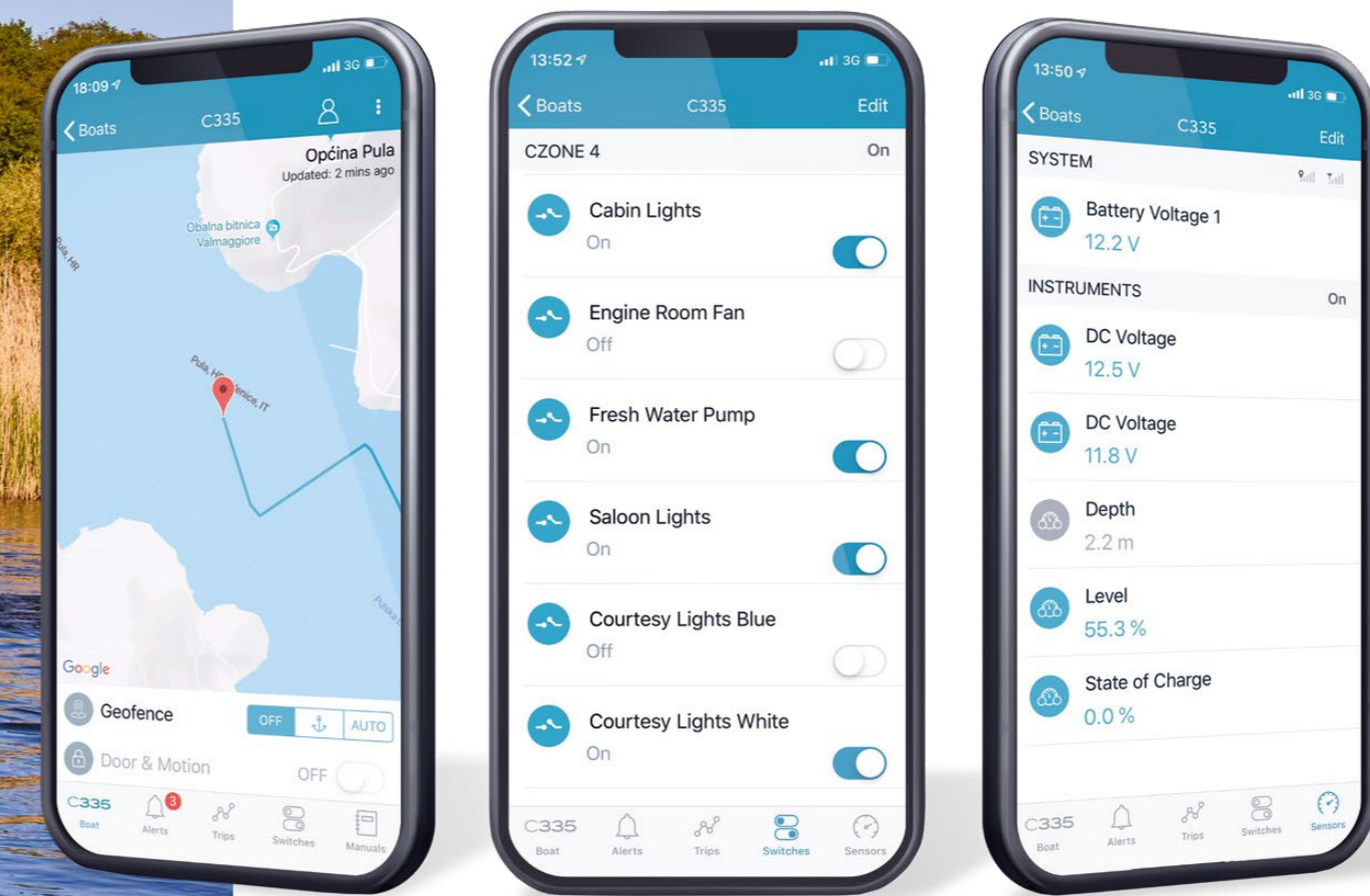
Another rarity in the 33-foot class, the generously equipped bathroom offers a separate shower cubicle and impresses with the elegant use of fine woods.


  
[See interior gallery](#)




# MY SEALINE Safety Cloud


Everyone is talking about the digital future. But SEALINE implements it – with the first cloud-based telematics system for series production motor yachts. You can access your boat's technical data and functions live via the mobile app or via the owner's area at [sealine.com](https://sealine.com)





 **SENSORS**  
Real-time monitoring of battery levels and devices.


 **SWITCH CONTROL**  
Control of lighting and electrical devices (optional).


 **ALERTS**  
Notifications for battery, bilge, shore power, anchor, geo fencing and more.


 **TRIPS**  
Electronic logbook with archive and share function for social media platforms.

 **REPORT ISSUE**  
Direct contact to the dealer.

 **MAINTENANCE**  
Push notifications before due dates for maintenance of all components.

 **SHOP & PARTS**  
Feature for ordering equipment, supplies and spare parts.

 **MANUALS**  
and operating instructions for all units and components on board.

 **INSURANCE**  
Exclusive in-app offers and conclusion of all insurances around the boat by Pantanius.



Amazes with  
outboards  
or inboards

## SEALINE C335v

Powered by 2 x 300 hp

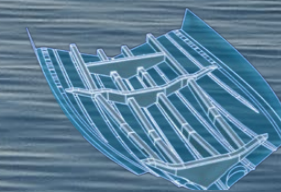
Suzuki developed the world's first outboard engines that successfully use the counter-rotating propeller technology. Their 300 hp duoprop motors impress with compact size, increased stability and more "grip" underwater.



## SEALINE C335

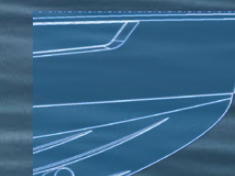
single or twin inboard drive

Choose your preferred engine configuration:  
1 x Volvo Penta D6-340, 1 x Volvo Penta D6-440  
or 2 x Mercury MD3,0L 270 hp.



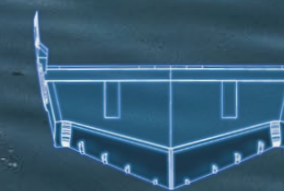
### Laminated power grid

The hull reinforcements of the SEALINE C335 and C335v are elaborately laminated – giving you the advantages of a high-strength boat with a reduced weight.



### Upright stem

The vertical bow with its curved foot pierces the waves elegantly and efficiently. This, in turn, results in more comfort and more boating pleasure.



### Deep V-shaped keel

The SEALINE hull cuts sharp through the waves. This means the SEALINE is exceptionally stable in the water, and you can feel the higher boating comfort as a result.

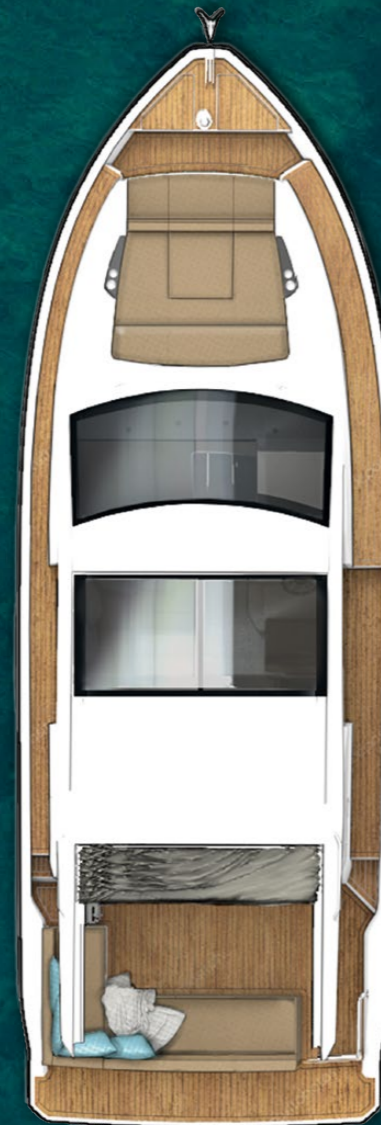


### C335

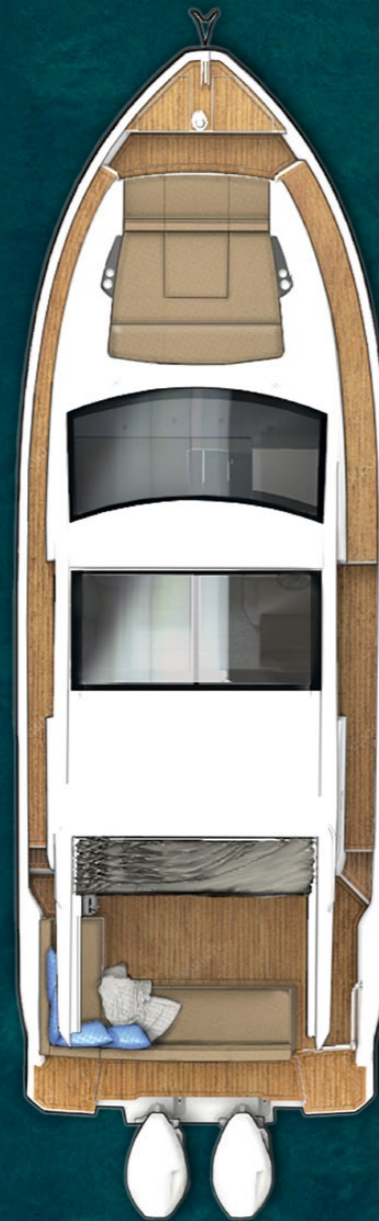
### C335v

#### Principal dimensions according to ISO 8666

	C335	
Length Overall (LOA)	10.31 m	33' 10"
Length of Hull (LH)	9.99 m	32' 9"
Beam (BH)	3.50 m	11' 6"
Draught (Tmax)	1.03 m	3' 5"
Air Height	3.42 m	11' 3"
Fuel capacity	570 l	125 UK gal
Water capacity	220 l	48 UK gal
Displacement	6.67 t	6.57 UK t
Max. persons		8
CE Category		B



Main deck roof  
standard



Main deck roof  
standard

#### Principal dimensions according to ISO 8666

	C335v	
Length Overall (LOA)	10.31 m	33' 10"
Length of Hull (LH)	10.07 m	33' 0"
Beam (BH)	3.50 m	11' 6"
Draught (Tmax)	0.89 m	2' 11"
Air Height	3.48 m	11' 5"
Fuel capacity	570 l	125 UK gal
Water capacity	220 l	48 UK gal
Displacement	7.27 t	7.16 UK t
Max. persons		8
CE Category		B

#### C335v Engine options

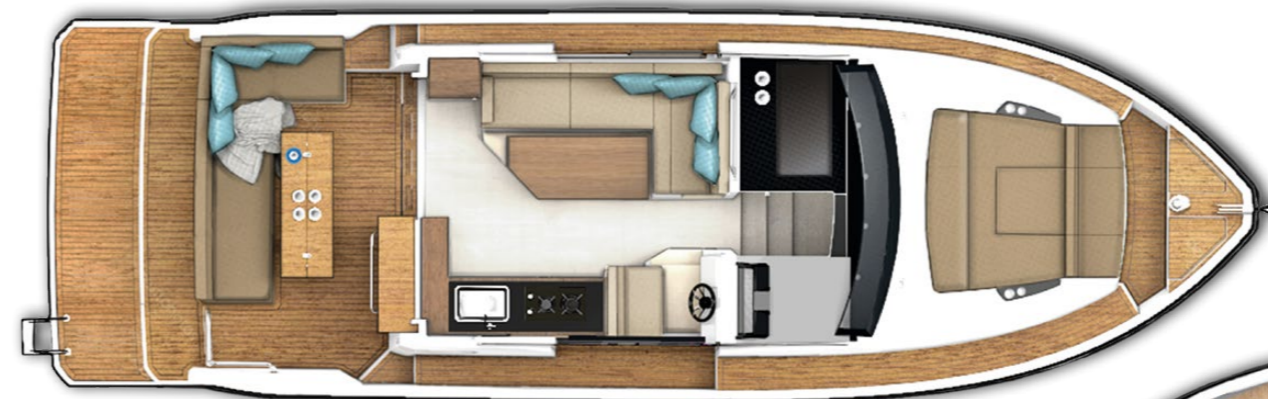
Max. outboard 2x300 hp/40 knots\*  
Your dealer will advise you

#### C335 Engine

**Standard**  
1 x Volvo Penta D6-340 25/26 knots\*

**Options**  
1 x Volvo Penta D6-440 30/31 knots\*  
2 x Mercury MD3,0L 270 hp 31 knots\*

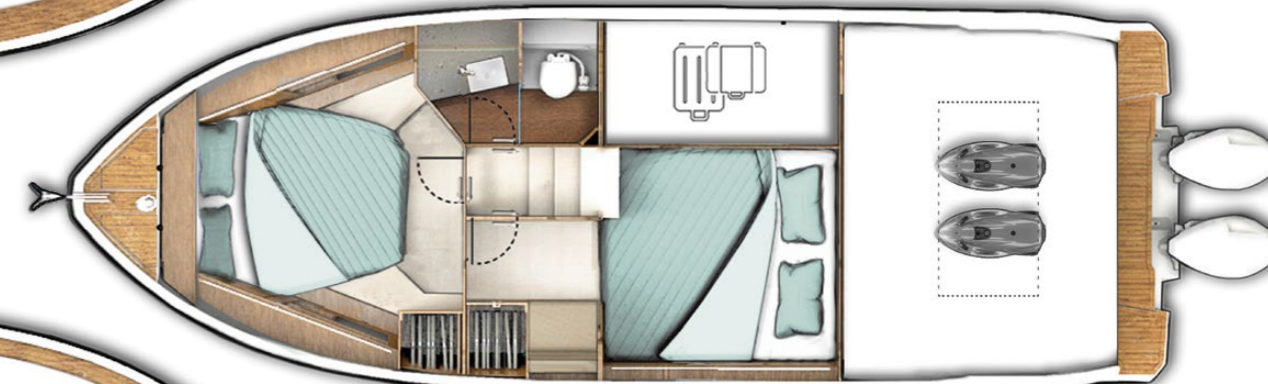
[Download specifications](#)



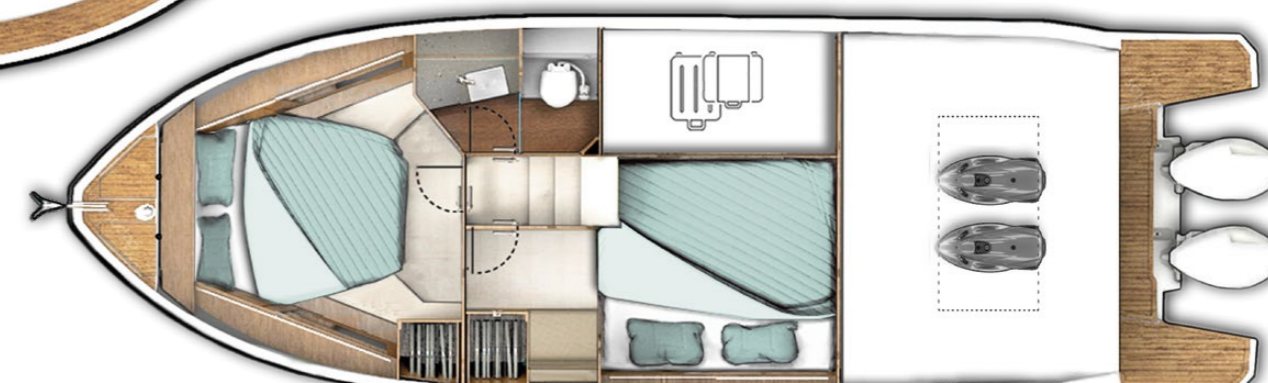
Main deck option  
with fixed cockpit table and  
extended bathing platform



Main deck option  
with cockpit table to be  
transformed into sunpad and  
extended bathing platform



Lower deck standard



Lower deck option  
with extended bathing platform

\*All performance figures are given in good faith and are intended as an indication. These figures cannot be guaranteed as top speed in particular is affected by the cleanliness of the hull, conditions of the propellers, weight carried and air/sea temperature. Performance is related also to the optional accessories selected. SEALINE reserves the right to change specifications in line with the company policy of improvement through research and development. Standard Propeller tested in Greifswald according to Volvo conditions. All measurements/figures approximate. Errors and omissions excepted. Specification and material can be changed without notice. Please check with your dealer for a full list of inclusions.



## Configure your own yacht in 3D

SEALINE yachts are just as unique as their owners. And you can find out how unique with the 3D configurator at [sealine.com](https://sealine.com). Choose the materials, colour combinations and layout to make your yacht your own online for the first time. In line with your configuration, you'll receive a tailored offer from SEALINE.

 Start configuration



Refine the side decks and bathing platform with the teak wood of your choice.

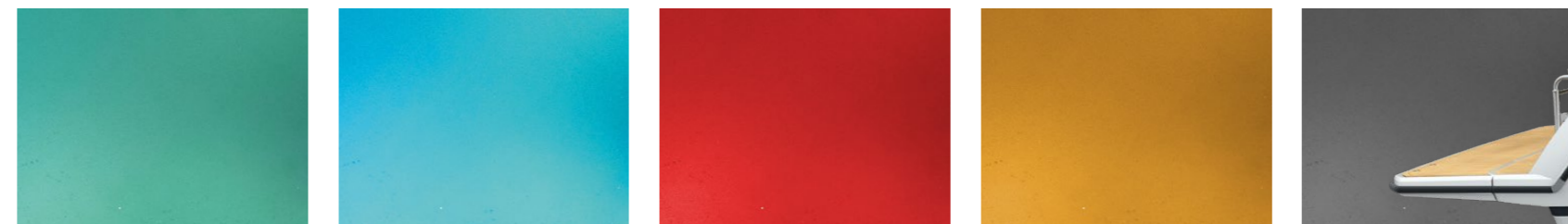


Our selection of elegant woods stands out with its perfectly harmonised colour and grain.

 Download all colours & materials



Make a statement from afar thanks to the expressive hull colour, which leaves behind a lasting first impression.





## Limitless variety, matchless quality

---

The manufacturing quality of the SEALINE C335 and C335v is a multi-sensory experience. Exquisite materials spoil the eye with every glance. A subtle scent of finest leathers blends with the pleasing feel of elegant woods. Anything you see or touch was masterfully handcrafted by superb boat builders. Enjoy an exclusive atmosphere that can only be created by the perfect match of sophisticated details.



## Each SEALINE is one of a kind

---

With your personal selection of colours and textures, you transform your SEALINE into a unique expression. Five teak options are available for the deck alone. We also offer special materials for cockpit seats and sun cushions. For the interior you can choose between different furniture woods, upholstery and curtains, while underfoot, select from wood or carpet.



German precision and passion  
for the sea. That's what a SEALINE  
is made of.

---

In 2013, the SEALINE brand found a worthy new home on the German Baltic coast. At our shipyard in Greifswald, we have perfected the interplay between state-of-the-art manufacturing techniques and skilled employees. The outstanding people in our team perform their work with enormous experience, a deep understanding of the customer and great dedication.

In addition, we are thrilled to cooperate with our British partner Bill Dixon. Working closely with our in-house experts, the award-winning designer is creating a new range of innovative SEALINE models.

Above all, we believe that what holds true for the experienced boater, also holds true for us as boat builders. Beyond the individual skill, there is something which genuinely binds all of us at SEALINE: A great passion for the sea.





Welcome on board

Your local SEALINE dealer is looking forward to your visit.



SEALINE  
C335 + C335v

# C335



# C335v



[www.sealine.com](http://www.sealine.com)

SEALINE Ladebower Chaussee 11 17493 Greifswald Germany