

SUNSATIION

NEW SEALINE S390





SEALINE S390

enjoy the

LIGHT

feel the

SPACE

combine functionality with

DESIGN

All SEALINE models are born of the same values: they feature wide interior spaces, an amazing quantity of natural light and outstanding design with German engineering inside. As for these trademarks, the S390 displays the true spirit of SEALINE.





SEALINE S390

AN INVITATION TO SUNSATIONAL DAYS

OPEN AND AIRY DECK DESIGN

A casual convertible atmosphere with closed or half-open windows.

2 OPENING ROOFS IN 4 VARIATIONS

Front: 2 sliding roofs or large soft top.
Rear: soft top, manual or electric.

BARBECUE BY THE SEA

The outdoor cockpit barbecue is in the perfect spot.

CUSTOMISED INTERIOR

2 or 3 berths for guests, galley down or large bathroom: the choice is yours.

EXTRA-LARGE TEAK PLATFORM

Fixed or lowering. With bathing ladder and deck shower.

OUTSTANDING USE OF SPACE

4.5sqm bow lounge. Largest cockpit in its class. Up to 6 berths. Volume to the max.



SWIM IN THE SEA. BATHE IN THE SUN.

The airy deck design of the new SEALINE S390 turns the sea into a living room. Half-height side windows and the open cockpit cleverly blend inside and outside. An irresistible summer yacht like this one needs a bathing platform with all the comforts: extra-long option with hydraulic control, a stainless-steel bathing ladder and hot water deck shower as standard.

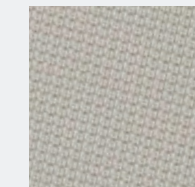
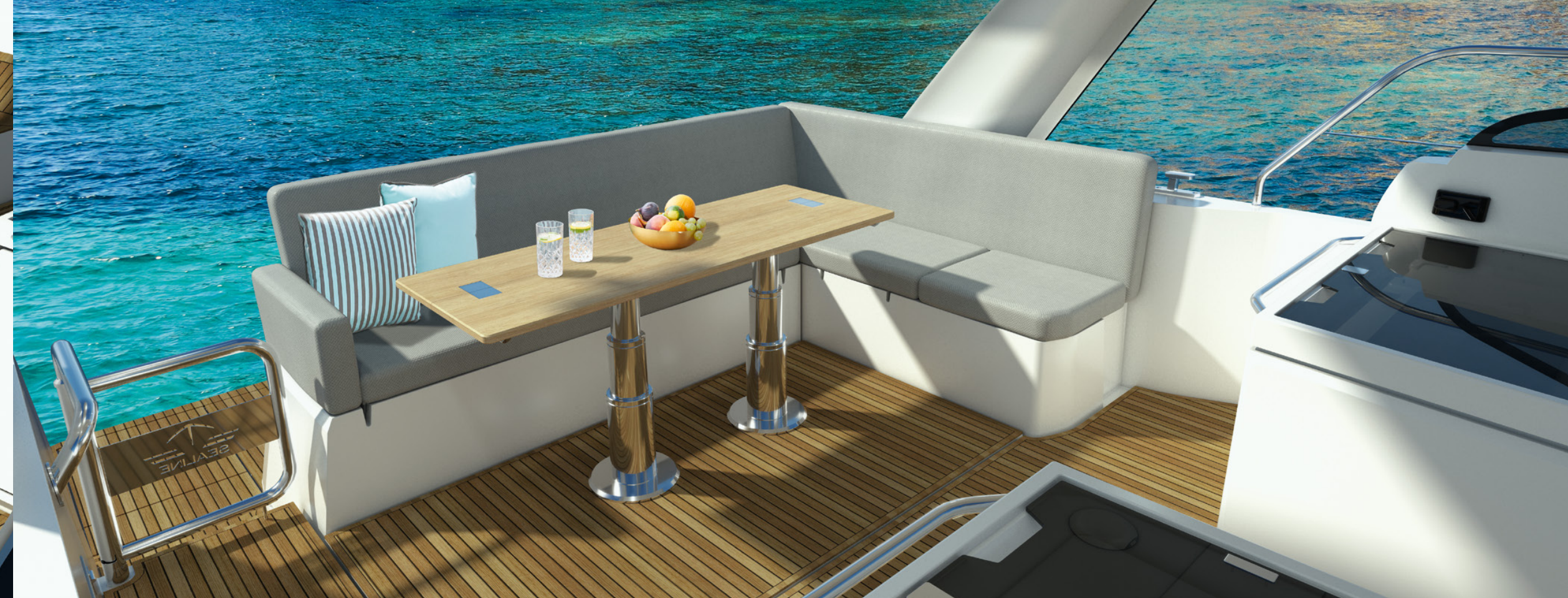


LOUNGING DE LUXE

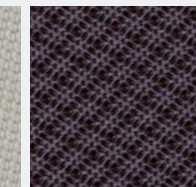
Relaxation can certainly be measured in numbers: With more than 4.5sqm of feel-good space, the foredeck lounge invites the entire crew to sunbathe.

- | Three cushions of the lounge can be individually raised to form backrests.
- | Enjoy the view from the front row in the foredeck lounge, with the integrated bench seat.
- | Wide side decks to port and starboard give easy access to the foredeck.

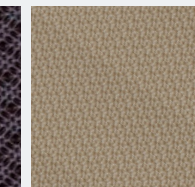




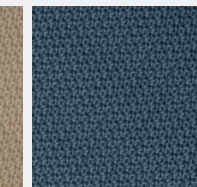
SARDINIA
GULL WING



MADEIRA
AUBERGINE



HITCH
STARFISH



HITCH
CERULEAN



 DOWNLOAD ALL
 COLOURS & MATERIALS

CHAT AND DINE

The large L-shaped sofa in the cockpit is the centre of life on board at any time of day. The soft top allows you to adjust the light and shade to suit you and your guests.

- | Adjustable table and backrest. Select this option to turn the cockpit into a sun terrace.
- | Fixed table and backrest: The right solution if you opt for the outdoor barbecue.



GET THE BIGGEST LIVING SPACE IN ITS CLASS

From your very first steps on deck, you will feel the special freedom of movement on board the SEALINE S390. Here, you can enjoy a summery lifestyle to the full.

- | Two galley units. 90l fridge, wet bar, choice of hob, grill or barbecue.
- | Plenty of room between the cockpit table and the galley units.
- | Thrilling drive for all. Clean, ergonomically designed steering position. Three additional passenger seats.






WATCH EXTERIOR GALLERY

THE TASTE OF EASY LIVING

With the option of an exterior grill at the stern, you can really take comfort on deck to the next level. Its perfect position makes barbecuing an experience in itself. Without taking a step, pass your grilled delicacies directly to family and friends in the cockpit. This feature includes a gas barbecue, wet bar and work surface. Separate LED lighting is also an option – for late-night alfresco dining.

WARM SUNSHINE OR COOLING SHADE?

Take on the director's role when it comes to light and shade. The two sunroofs of the SEALINE S390 are the stars here. We offer two sliding glass roofs as standard above the helm station and the galley units. For an extra-large roof opening and maximum sunlight, choose the electric soft top. Further aft, you can vary the light and shade in the cockpit via the rear soft top – either automatically or manually.



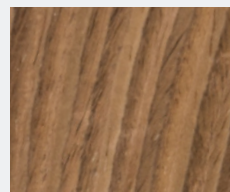
SEALINE S390



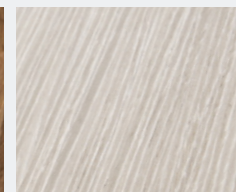
BRIGHTNESS, WELL DESIGNED

The ambience of the owner's cabin rests on the interplay between precious wood and natural light, which streams in from four sides. Two wardrobes and a king-size island berth define the lavish comfort, which combines outstanding craftsmanship and the highest manufacturing standards.

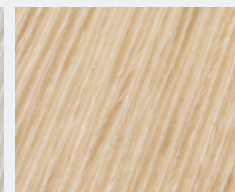

DOWNLOAD ALL
COLOURS & MATERIALS



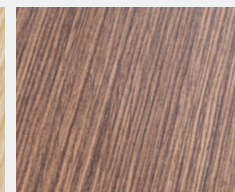
ATLANTA
WALNUT



SHERWOOD
CHESTNUT



ONTARIO
OAK



MADISON
WOOD





STAGED BY LIGHT. EVEN AT NIGHT.

It is the fine art of interior design to make the aesthetics of a space work in any lighting. During the day, the sun brings out the elegance of the owner's cabin via hull windows, front windows and skylights. At night, SEALINE's finely balanced lighting concept takes over the task: clever indirect lighting accentuates the shape of the spaces and creates an engaging, harmonious atmosphere.





INTERIOR, INSPIRED BY YOU

The companionway opens into an atmospherically lit saloon with L-shaped sofa and entertainment system. The table can be lowered to create an additional berth. On the starboard side amidships, SEALINE will implement your chosen layout. Options include a galley with microwave, or fitted cupboards.



MAKE ROOM FOR WELLBEING

Is a spacious wellness area an important feature of a luxury yacht for you? Then have the starboard side amidships completely fitted out as a bathroom – with an extra-large shower cabin and special SEALINE designer fittings. Enjoy separate access to the bathroom from your owner's cabin, whether you choose the standard or the enlarged layout.



YOUR GUESTS DESERVE SEA VIEW

The full beam of the aft space is reserved for your guests. To starboard, the cabin is always fitted with a twin berth. On the port side you have the choice of another single berth or a chest of drawers. Separate hull windows on both sides offer delightful views and the possibility of cross-ventilation.

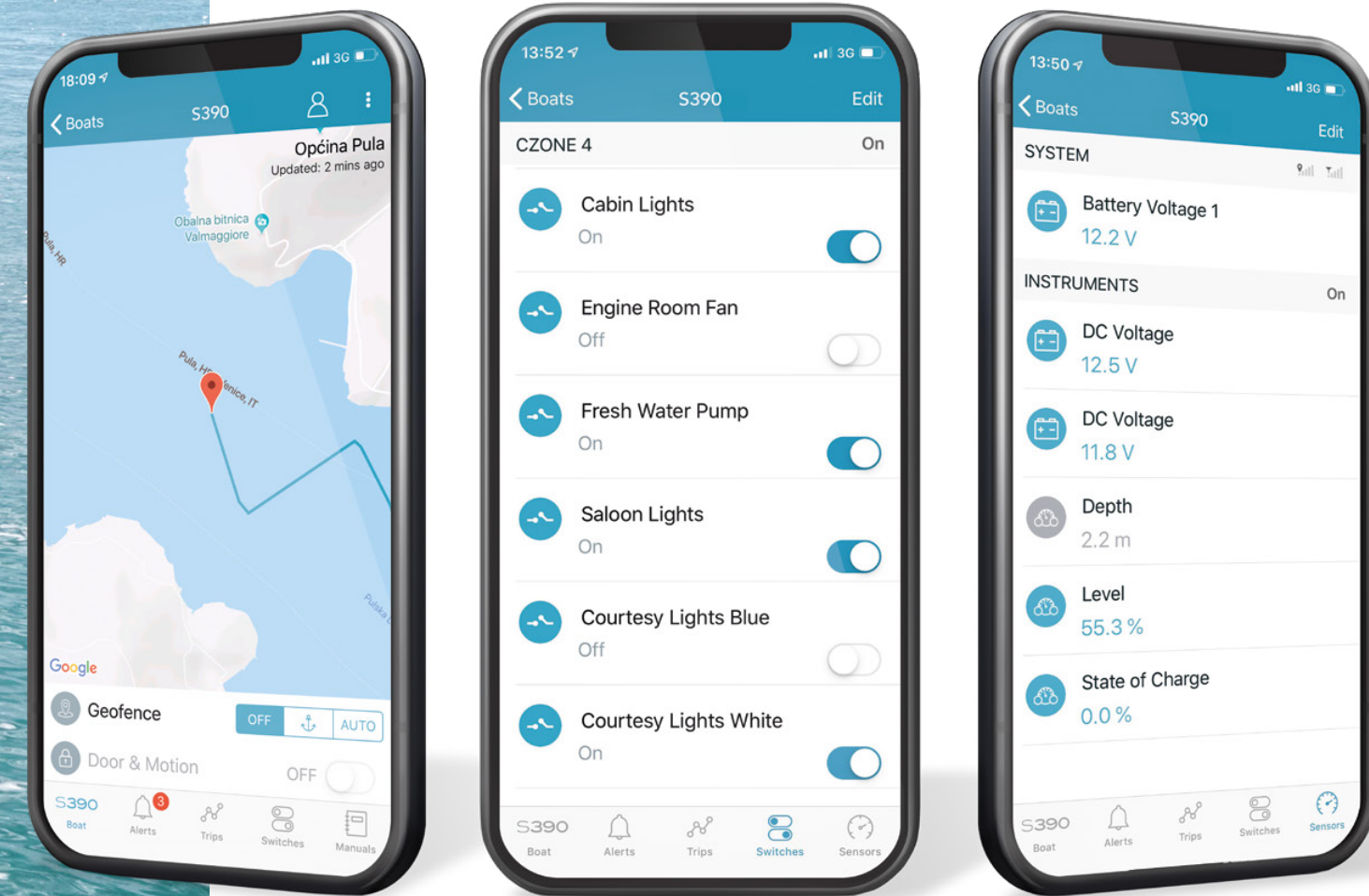

WATCH INTERIOR GALLERY





MY SEALINE SAFETY CLOUD

Everyone is talking about the digital future. But SEALINE implements it – with the first cloud-based telematics system for series production motor yachts. You can access your boat's technical data and functions live via the mobile app or via the owner's area at sealine.com



SENSORS

Real-time monitoring of battery levels and devices.



SWITCH CONTROL

Control of lighting and electrical devices (optional).



ALERTS

Notifications for battery, bilge, shore power, anchor, geo fencing and more.



TRIPS

Electronic logbook with archive and share function for social media platforms.



REPORT ISSUE

Direct contact to the dealer.



MAINTENANCE

Push notifications before due dates for maintenance of all components.



SHOP & PARTS

Feature for ordering equipment, supplies and spare parts.



MANUALS

and operating instructions for all units and components on board.



INSURANCE

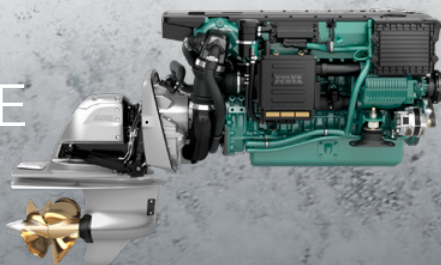
Exclusive in-app offers and conclusion of all insurances around the boat by Pantaenius.

SEALINE S390



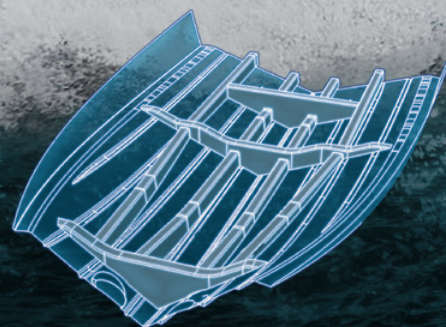
HIGH PERFORMANCE AND LOW NOISE

Choose your engines: VOLVO PENTA D4-320 or VOLVO PENTA D6-380. Be fascinated by a speed of 34 knots with the power of 760hp.



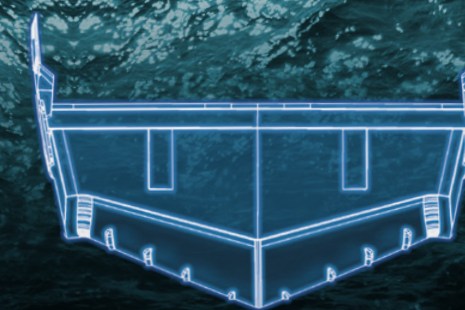
LAMINATED POWER GRID

The hull reinforcements of the SEALINE S390 are elaborately laminated – giving you the advantages of a high-strength yacht with a reduced weight.



DEEP V-SHAPE KEEL

The SEALINE S390 hull has a deep-V shape. This means the SEALINE is exceptionally stable in the water, making for more comfortable boating.



UPRIGHT STEM

The vertical bow with its curved foot pierces the waves elegantly and efficiently. This, in turn, results in more comfort and more boating pleasure.



PRINCIPAL DIMENSIONS
 according to ISO 8666

LOA	11.99 m	39' 4"
LOA – ext. platform	12.50 m	41' 0"
LH	11.00 m	36' 1"
Beam	3.85 m	12' 8"
Draught	1.19 m	3' 11"
Height above waterline inc. mast	3.80 m	12' 6"
Height above waterline excl. mast	3.20 m	10' 6"
Fuel capacity	900 l	198 UK gal
Water capacity	220 l	48 UK gal
Displacement approx.	10.52 t	10.35 UK t
Max. people on board	10	
CE Category	B -10 / C -14	

ENGINE STANDARD

2 x Volvo Penta D4-320 HP stern drive 27 knots*

ENGINE OPTION

2 x Volvo Penta D6-380 HP stern drive 34 knots*

*All performance figures are given in good faith and are intended as an indication. These figures cannot be guaranteed as top speed in particular is affected by the cleanliness of the hull, conditions of the propellers, weight carried and air/sea temperature. Performance is related also to the optional accessories selected. SEALINE reserves the right to change specifications in line with the company policy of improvement through research and development. Standard Propeller tested in Greifswald according to Volvo conditions. All measurements/figures approximate. Errors and omissions excepted. Specification and material can be changed without notice. Please check with your dealer for a full list of inclusions. Valid from 2021.09.06.



MAIN DECK ROOF
 standard



MAIN DECK ROOF
 option
 with soft top



MAIN DECK option
 with barbecue at stern,
 extended platform and
 fixed cockpit table



MAIN DECK option
 with cockpit table to be
 transformed into sunpad
 and extended bathing platform



LOWER DECK standard



LOWER DECK option
 galley either with gas stove
 and gas oven or electric cooking top
 and microwave



LOWER DECK option
 storage room with cupboards

A1

B1

C1

A2/A3

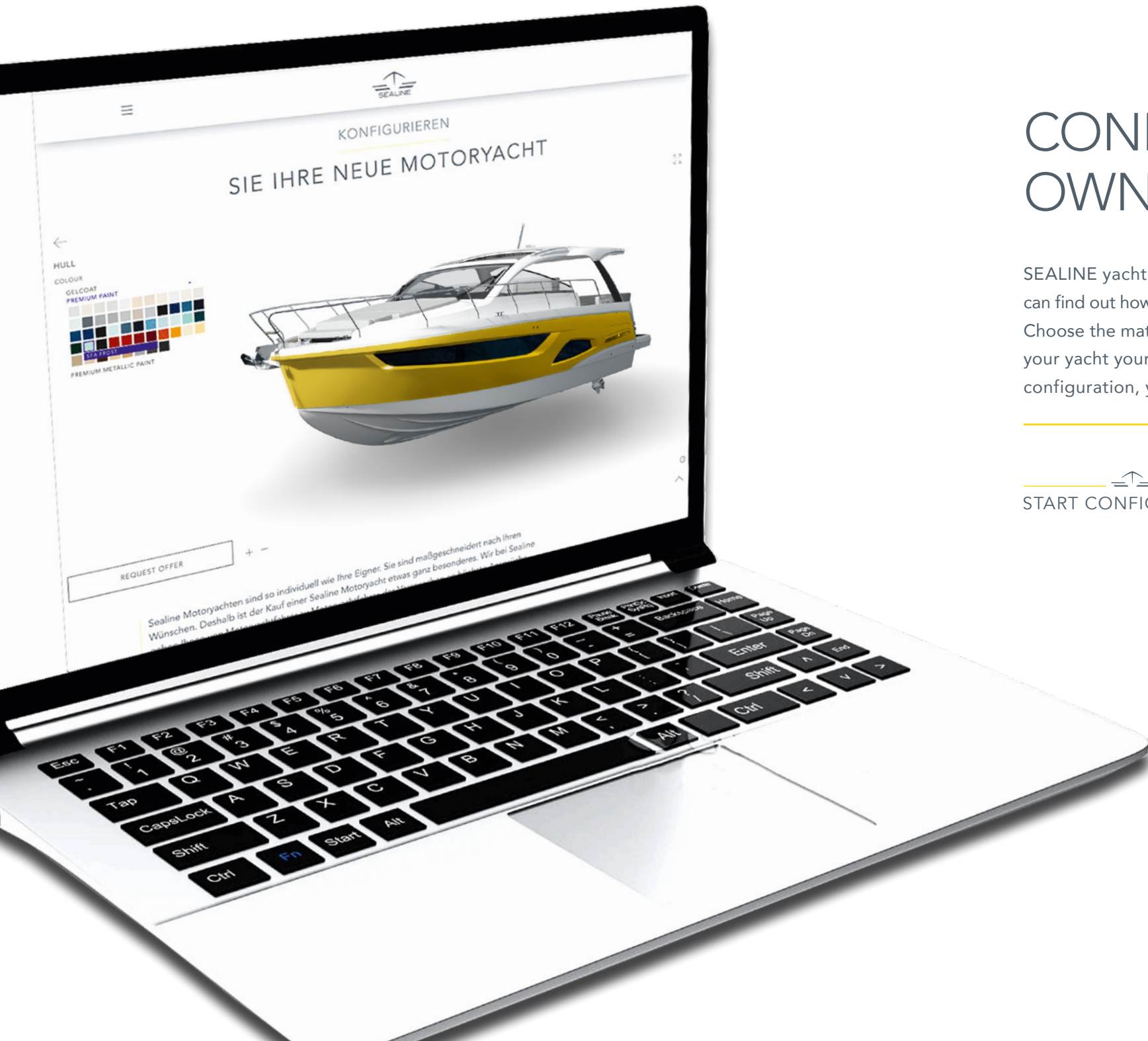
B1

C2

A4

B1

C2



CONFIGURE YOUR OWN YACHT IN 3D

SEALINE yachts are just as unique as their owners. And you can find out how unique with the 3D Configurator at sealine.com. Choose the materials, colour combinations and layout to make your yacht your own online for the first time. In line with your configuration, you'll receive a tailored offer from SEALINE.


START CONFIGURATION



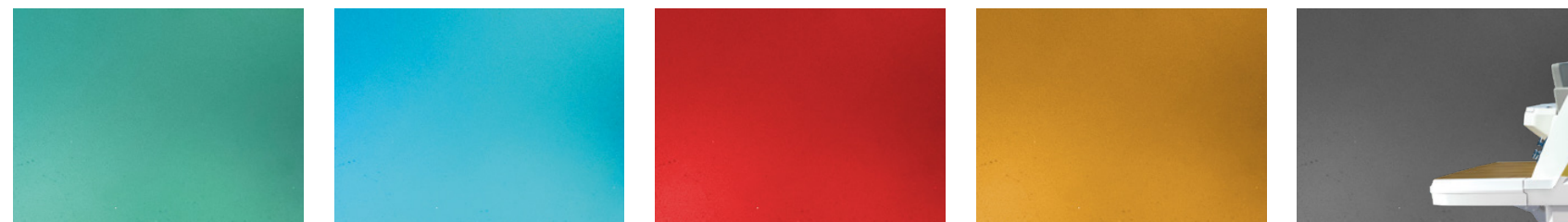
Refine the side decks and bathing platform with the teak wood of your choice.



Our selection of elegant woods stands out with its perfectly harmonised colour and grain.



Make a statement from afar thanks to the expressive hull colour, which leaves behind a lasting first impression.



SEALINE S390

WELCOME ON BOARD



S390



www.sealine.com

SEALINE Ladebower Chaussee 11 17493 Greifswald, Germany